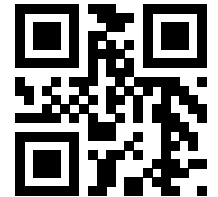


Technical Specification

883456\_5.0



# Flygt 3301

50 HZ



---

# Table of Contents



1 N-pump, Standard Motor.....	2
1.1 Product description.....	2
1.2 Motor rating and performance curves 3301.090/.095/.180/.185.....	5
1.3 Motor rating and performance curves 3301.660/.670.....	7
2 N-pump, Premium Efficiency Motor (IE3).....	11
2.1 Product description.....	11
2.2 Motor rating and performance curves 3301.800/.810/.820/.830.....	14
2.3 Motor rating and performance curves 3301.860/.870.....	16
3 Dimensions and Weight, Standard Motor.....	19
3.1 Drawings.....	19
4 Dimensions and Weight, Premium Efficiency Motor (IE3).....	25
4.1 Drawings.....	25

# 1 N-pump, Standard Motor

## 1.1 Product description



### Usage

A submersible pump for efficient pumping of clean water, surface water, and wastewater containing solids or long-fibered material. The pump is designed for sustained high efficiency. For abrasive media, Hard-Iron™ is required. Stainless steel N-impeller is available as an option.

### Denomination

Type	Non-explosion proof version	Explosion proof version	Pressure class	Installation types
Gray iron	3301.180	3301.090	LT – Low head MT – Medium head HT – High head	P, S, T, Z
Hard-Iron™	3301.185	3301.095	LT – Low head MT – Medium head HT – High head	P, S, T, Z
Stainless steel	3301.660	3301.670	LT – Low head MT – Medium head HT – High head	P, S

The pump can be used in the following installations:

- P Semipermanent, wet well arrangement with the pump installed on two guide bars. The connection to the discharge is automatic.
- S Portable semipermanent, wet well arrangement with hose coupling or flange for connection to the discharge pipeline.
- T Vertical permanent, dry well arrangement with flange connection to the suction and discharge piping.
- Z Horizontal permanent, dry well arrangement with flange connection to the suction and discharge piping.

### Application limits

Feature	Description
Liquid temperature	Maximum 40°C (104°F)

Feature	Description
Liquid temperature, warm water version	Maximum 70°C (158°F)
Depth of immersion	Maximum 20 m (65 ft)
pH of the pumped liquid	5.5 - 14
Liquid density	Maximum 1100 kg/m <sup>3</sup>

### Motor data

Feature	Description
Motor type	Squirrel-cage induction motor
Frequency	50 Hz
Power supply	3-phase
Starting method	<ul style="list-style-type: none"> <li>• Direct on-line</li> <li>• Star-delta</li> <li>• Variable Frequency Drive (VFD)</li> </ul>
Number of starts per hour	Maximum 30
Code compliance	IEC 60034-1
Voltage variation	<ul style="list-style-type: none"> <li>• Continuously running: Maximum <math>\pm 5\%</math></li> <li>• Intermittent running: Maximum <math>\pm 10\%</math></li> </ul>
Voltage imbalance between phases	Maximum 2%
Stator insulation class	H (180°C, 356°F)



### Cables

Application	Type
Direct-on-line start or Y/D start with two cables	Flygt SUBCAB® - a heavy duty 4 cores motor power cable with two twisted pair screened control cores. Conductor insulation rating of 90°C, which allows for increased current. Superior mechanical strength and high abrasion and tear resistant. Chemical resistant within pH 3-10 and ozone, oil, and flame resistant. Used up to 70°C water temperature. Cables < 10 mm <sup>2</sup> with unscreened control cores.
Y/D start	Flygt SUBCAB® - a heavy duty 7 cores motor power cable with two twisted pair screened control cores. Conductor insulation rating of 90°C, which allows for increased current. Superior mechanical strength and high abrasion and tear resistant. Chemical resistant within pH 3-10 and ozone, oil, and flame resistant. Used up to 70°C water temperature. Cables < 7G6 mm <sup>2</sup> with unscreened control cores.
Variable Frequency drive	Screened Flygt SUBCAB® - a heavy duty 4 screened cores motor power cable with four twisted pair screened control cores. Conductor insulation rating of 90°C, which allows for increased current. Superior mechanical strength and high abrasion and tear resistant. Chemical resistant within pH 3-10 and ozone, oil, and flame resistant. Used up to 70°C water temperature.

### Monitoring equipment

- Thermal contacts opening temperature 140°C (284°F)
- Leakage sensor in the inspection chamber (FLS10)

## Materials



Table 1: Major parts except mechanical seals

Denomination	Material	ASTM	EN
Major castings	Cast iron, gray	35B	GJL-250
Pump housing	Cast iron, gray	35B	GJL-250
Impeller, alternative 1	Cast iron, gray	35B	GJL-250
Impeller, alternative 2	Cast iron, Hard-Iron™	A 532 IIIA	GJN-HB555(XCR23)
Impeller, alternative 3	Stainless steel, Duplex	CD-4MCuN	10283:2010 -1.4474
Insert ring, alternative 1	Cast iron, gray	35B	GJL-250
Insert ring, alternative 2	Cast iron, Hard-Iron™	A 532 IIIA	GJN-HB555(XCR23)
Cooling jacket, inner	Steel	A572 Grade 60	1.0045, 1.0553, ...
Cooling jacket, outer, alternative 1	Steel	GR65	S235JRG2
Cooling jacket, outer, alternative 2	Stainless steel	AISI 316L	1.4404, 1.4432, ...
Lifting handle	Stainless steel	AISI 316L	1.4404, 1.4432, ...
Shaft	Stainless steel	AISI 431	1.4057+QT800
Screws and nuts	Stainless steel, A4	AISI 316L, 316, 316Ti	1.4401, 1.4404, ...
O-rings, alternative 1	Nitrile rubber (NBR) 70° IRH	-	-
O-rings, alternative 2	Fluorinated rubber (FPM) 70° IRH	-	-
Glycol	Heat transfer fluid based on monopropylene glycol.	-	-

Table 2: Mechanical seals

Alternative	Inner seal	Outer seal
1	Corrosion resistant cemented carbide (WCCR)/ Corrosion resistant cemented carbide (WCCR)	Corrosion resistant cemented carbide (WCCR)/ Corrosion resistant cemented carbide (WCCR)
2	Corrosion resistant cemented carbide (WCCR)/ Corrosion resistant cemented carbide (WCCR)	Silicon carbide (RSiC)/ Silicon carbide (RSiC)

## Surface treatment

Priming	Finish
Painted with a primer, see internal standard M0700.00.0002	Navy gray color NCS 5804-B07G. Two-component high-solid top coating, see internal standard M0700.00.0004 for standard painting and M0700.00.0008 for special painting.

## Options

- Warm liquid version (non-explosion proof versions)
- Sensors: Thermistor, FLS, Pt100, VIS 10
- Pump memory
- Surface treatment (Epoxy)
- Zinc anodes
- Other cables

## Accessories

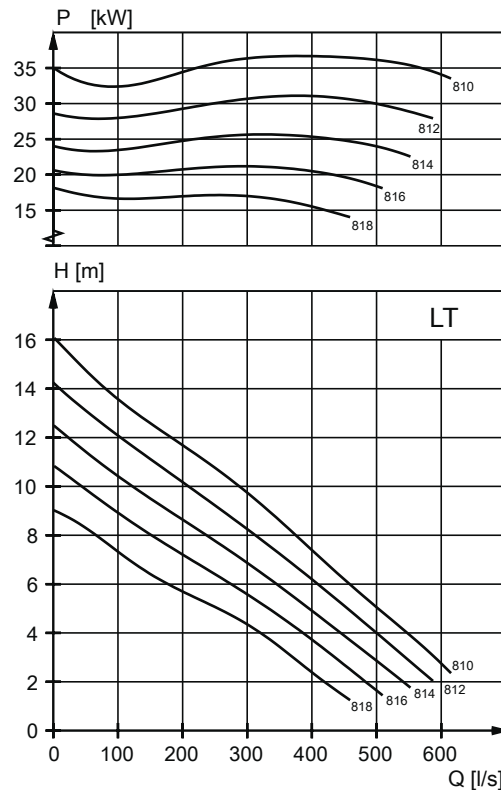
Discharge connections, adapters, hose connections, and other mechanical accessories  
Electrical accessories such as pump controller, control panels, starters, monitoring relays, cables

## 1.2 Motor rating and performance curves 3301.090/.095/.180/.185

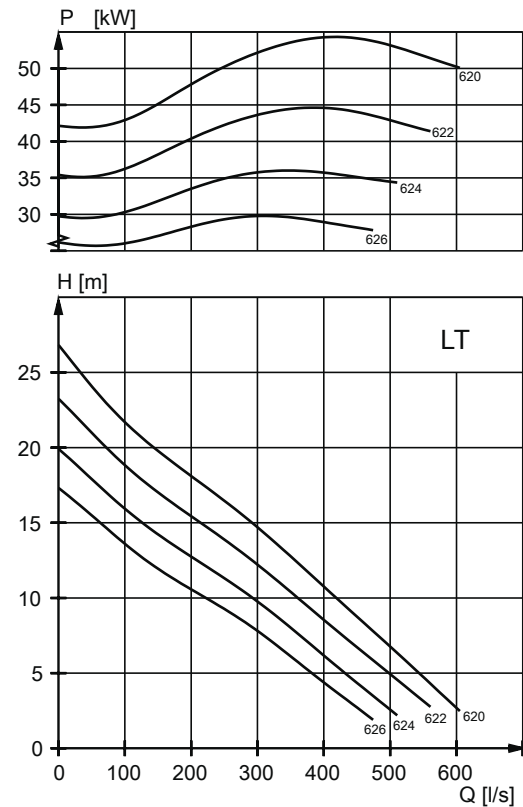
These are examples of motor rating and curves. For more information, please contact your local sales and service representative.

Star-delta starting current is 1/3 of Direct on-line starting current.

LT



WS004062A



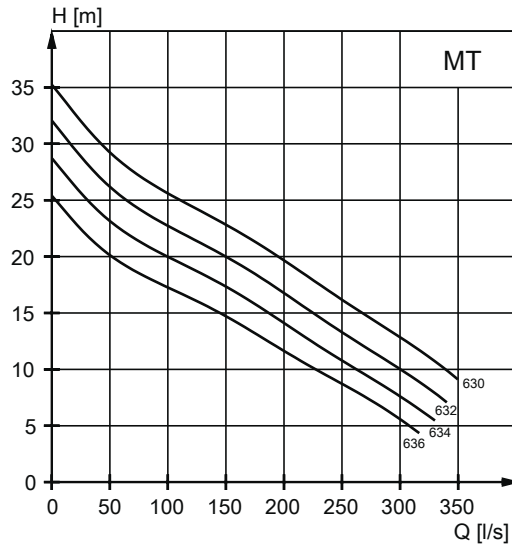
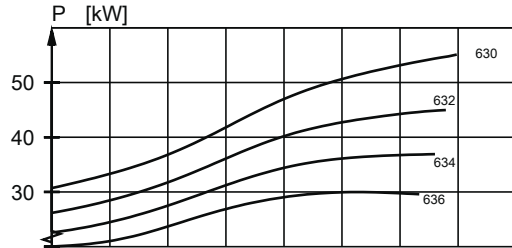
WS004063A

Table 3: 400 V, 50 Hz, 3-phase

Rated power, kW	Rated power, hp	Curve/ Impeller No	Revolutions per minute, rpm	Rated current, A	Starting current, A	Power factor, cos $\phi$	Installation
37	50	810	735	80	425	0.74	P,T,Z
37	50	812	735	80	425	0.74	P,T,Z
37	50	814	735	80	425	0.74	P,T,Z
37	50	816	735	80	425	0.74	P,T,Z
37	50	818	735	80	425	0.74	P,T,Z
45	60	622	985	93	545	0.78	P,S,T,Z
45	60	624	985	93	545	0.78	P,S,T,Z
45	60	626	985	93	545	0.78	P,S,T,Z
55	74	620	985	113	660	0.78	P,S,T,Z
55	74	622	985	113	660	0.78	P,S,T,Z

Rated power, kW	Rated power, hp	Curve/ Impeller No	Revolutions per minute, rpm	Rated current, A	Starting current, A	Power factor, cos φ	Installation
55	74	624	985	113	660	0.78	P,S,T,Z
55	74	626	985	113	660	0.78	P,S,T,Z

MT



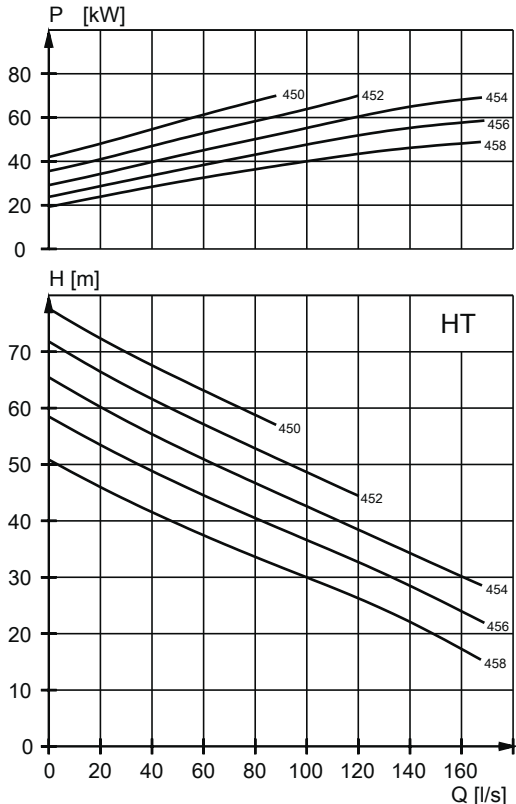
WS004064A

Table 4: 400 V, 50 Hz, 3-phase

Rated power, kW	Rated power, hp	Curve/ Impeller No	Revolutions per minute, rpm	Rated current, A	Starting current, A	Power factor, cos φ	Installation
45	60	632	985	93	545	0.78	P,S,T,Z
45	60	634	985	93	545	0.78	P,S,T,Z
45	60	636	985	93	545	0.78	P,S,T,Z
55	74	630	985	113	660	0.78	P,S,T,Z
55	74	632	985	113	660	0.78	P,S,T,Z
55	74	634	985	113	660	0.78	P,S,T,Z
55	74	636	985	113	660	0.78	P,S,T,Z



HT



WS004065A

Table 5: 400 V, 50 Hz, 3-phase

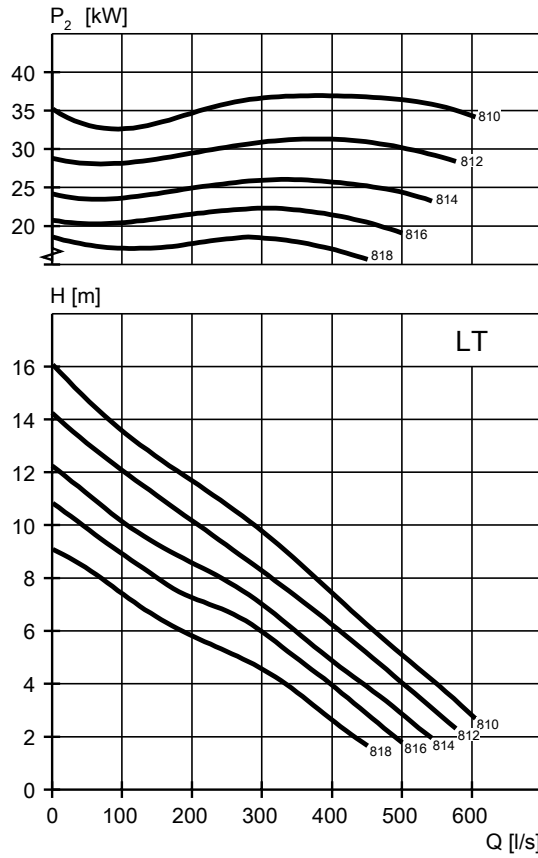
Rated power, kW	Rated power, hp	Curve/ Impeller No	Revolutions per minute, rpm	Rated current, A	Starting current, A	Power factor, cos φ	Installation
55	74	452	1475	103	490	0.84	P,S,T,Z
55	74	454	1475	103	490	0.84	P,S,T,Z
55	74	456	1475	103	490	0.84	P,S,T,Z
55	74	458	1475	103	490	0.84	P,S,T,Z
70	94	450	1475	132	565	0.83	P,S,T,Z
70	94	452	1475	132	565	0.83	P,S,T,Z
70	94	454	1475	132	565	0.83	P,S,T,Z
70	94	456	1475	132	565	0.83	P,S,T,Z
70	94	458	1475	132	565	0.83	P,S,T,Z

### 1.3 Motor rating and performance curves 3301.660/.670

These are examples of motor rating and curves. For more information, please contact your local sales and service representative.

Star-delta starting current is 1/3 of Direct on-line starting current.

LT

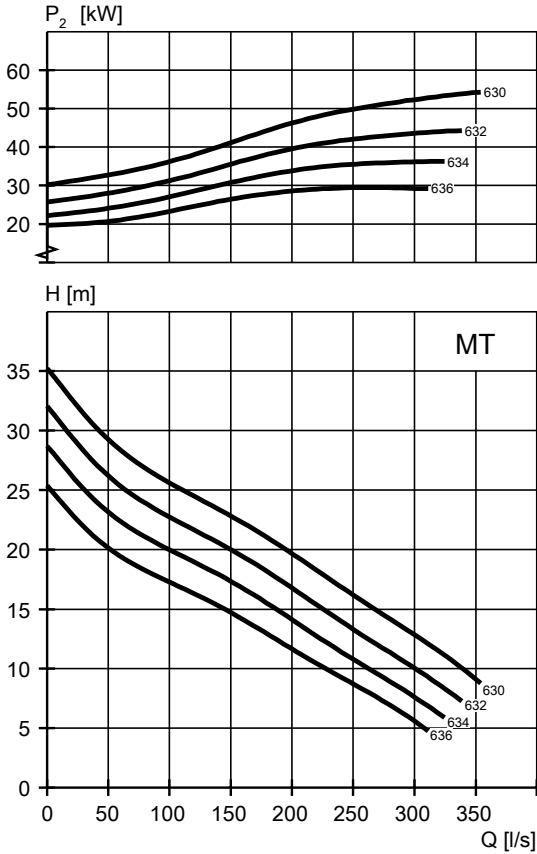


WS007740A

Table 6: 400 V, 50 Hz, 3-phase

Rated power, kW	Rated power, hp	Curve/ Impeller No	Revolutions per minute, rpm	Rated current, A	Starting current, A	Power factor, $\cos \phi$	Installation
37	50	810	735	80	425	0.74	P,S,T,Z
37	50	812	735	80	425	0.74	P,S,T,Z
37	50	814	735	80	425	0.74	P,S,T,Z
37	50	816	735	80	425	0.74	P,S,T,Z
37	50	818	735	80	425	0.74	P,S,T,Z

MT

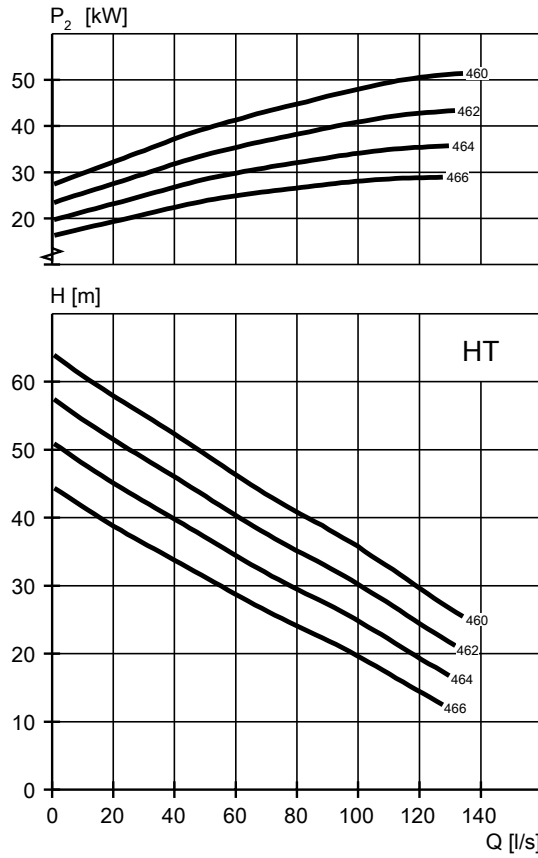


WS007741A

Table 7: 400 V, 50 Hz, 3-phase

Rated power, kW	Rated power, hp	Curve/ Impeller No	Revolutions per minute, rpm	Rated current, A	Starting current, A	Power factor, cos φ	Installation
45	60	632	985	93	545	0.78	P,S,T,Z
45	60	634	985	93	545	0.78	P,S,T,Z
45	60	636	985	93	545	0.78	P,S,T,Z
55	74	630	985	113	660	0.78	P,S,T,Z
55	74	632	985	113	660	0.78	P,S,T,Z
55	74	634	985	113	660	0.78	P,S,T,Z
55	74	636	985	113	660	0.78	P,S,T,Z

HT



WS007739A

Table 8: 400 V, 50 Hz, 3-phase

Rated power, kW	Rated power, hp	Curve/ Impeller No	Revolutions per minute, rpm	Rated current, A	Starting current, A	Power factor, cos φ	Installation
55	74	460	1475	98	520	0.88	P,S,T,Z
55	74	462	1475	98	520	0.88	P,S,T,Z
55	74	464	1475	98	520	0.88	P,S,T,Z
55	74	466	1475	98	520	0.88	P,S,T,Z
70	94	460	1475	132	565	0.83	P,S,T,Z
70	94	462	1475	132	565	0.83	P,S,T,Z
70	94	464	1475	132	565	0.83	P,S,T,Z
70	94	466	1475	132	565	0.83	P,S,T,Z

# 2 N-pump, Premium Efficiency Motor (IE3)

## 2.1 Product description



### Usage

A submersible pump for efficient pumping of clean water, surface water, and wastewater containing solids or long-fibered material. The pump is designed for sustained high efficiency. For abrasive media, Hard-Iron™ is required. Stainless steel N-impeller is available as an option.

### Denomination

Type	Non-explosion proof version	Explosion proof version	Pressure class	Installation types
Gray iron	3301.800	3301.810	LT – Low head MT – Medium head HT – High head	P, S, T, Z
Hard-Iron™	3301.820	3301.830	LT – Low head MT – Medium head HT – High head	P, S, T, Z
Stainless steel	3301.860	3301.870	MT – Medium head HT – High head	P, S

The pump can be used in the following installations:

- P Semipermanent, wet well arrangement with the pump installed on two guide bars. The connection to the discharge is automatic.
- S Portable semipermanent, wet well arrangement with hose coupling or flange for connection to the discharge pipeline.
- T Vertical permanent, dry well arrangement with flange connection to the suction and discharge piping.
- Z Horizontal permanent, dry well arrangement with flange connection to the suction and discharge piping.

## Application limits

Feature	Description
Liquid temperature	Maximum 40°C (104°F)
Depth of immersion	Maximum 20 m (65 ft)
pH of the pumped liquid	5.5 - 14
Liquid density	Maximum 1100 kg/m <sup>3</sup>

## Motor data



Feature	Description
Motor type	Squirrel-cage induction motor
Frequency	50 Hz
Power supply	3-phase
Starting method	<ul style="list-style-type: none"> <li>• Direct on-line</li> <li>• Star-delta</li> <li>• Variable Frequency Drive (VFD)</li> </ul>
Number of starts per hour	Maximum 30
Code compliance	IEC 60034-1
Voltage variation	<ul style="list-style-type: none"> <li>• Continuously running: Maximum ±5%</li> <li>• Intermittent running: Maximum ±10%</li> </ul>
Voltage imbalance between phases	Maximum 2%
Stator insulation class	H (180°C, 356°F)

## Cables

Application	Type
Direct-on-line start or Y/D start with two cables	Flygt SUBCAB® - a heavy duty 4 cores motor power cable with two twisted pair screened control cores. Conductor insulation rating of 90°C, which allows for increased current. Superior mechanical strength and high abrasion and tear resistant. Chemical resistant within pH 3-10 and ozone, oil, and flame resistant. Used up to 70°C water temperature. Cables < 10 mm <sup>2</sup> with unscreened control cores.
Y/D start	Flygt SUBCAB® - a heavy duty 7 cores motor power cable with two twisted pair screened control cores. Conductor insulation rating of 90°C, which allows for increased current. Superior mechanical strength and high abrasion and tear resistant. Chemical resistant within pH 3-10 and ozone, oil, and flame resistant. Used up to 70°C water temperature. Cables < 7G6 mm <sup>2</sup> with unscreened control cores.
Variable Frequency drive	Screened Flygt SUBCAB® - a heavy duty 4 screened cores motor power cable with four twisted pair screened control cores. Conductor insulation rating of 90°C, which allows for increased current. Superior mechanical strength and high abrasion and tear resistant. Chemical resistant within pH 3-10 and ozone, oil, and flame resistant. Used up to 70°C water temperature.

## Monitoring equipment

- Thermal contacts opening temperature 140°C (284°F)
- Leakage sensor in the inspection chamber (FLS10)

## Materials

Table 9: Major parts except mechanical seals

Denomination	Material	ASTM	EN
Major castings	Cast iron, gray	35B	GJL-250
Pump housing	Cast iron, gray	35B	GJL-250
Impeller, alternative 1	Cast iron, gray	35B	GJL-250
Impeller, alternative 2	Cast iron, Hard-Iron™	A 532 IIIA	GJN-HB555(XCR23)
Impeller, alternative 3	Stainless steel, Duplex	CD-4MCuN	10283:2010 -1.4474
Insert ring, alternative 1	Cast iron, gray	35B	GJL-250
Insert ring, alternative 2	Cast iron, Hard-Iron™	A 532 IIIA	GJN-HB555(XCR23)
Cooling jacket, inner	Steel	A572 Grade 60	1.0045, 1.0553, ...
Cooling jacket, outer, alternative 2	Stainless steel	AISI 316L	1.4404, 1.4432, ...
Lifting handle	Stainless steel	AISI 316L	1.4404, 1.4432, ...
Shaft	Stainless steel	AISI 431	1.4057+QT800
Screws and nuts	Stainless steel, A4	AISI 316L, 316, 316Ti	1.4401, 1.4404, ...
O-rings, alternative 1	Nitrile rubber (NBR) 70° IRH	-	-
O-rings, alternative 2	Fluorinated rubber (FPM) 70° IRH	-	-
Glycol	Heat transfer fluid based on monopropylene glycol.	-	-

Table 10: Mechanical seals

Alternative	Inner seal	Outer seal
1	Corrosion resistant cemented carbide (WCCR)/ Corrosion resistant cemented carbide (WCCR)	Corrosion resistant cemented carbide (WCCR)/ Corrosion resistant cemented carbide (WCCR)
2	Corrosion resistant cemented carbide (WCCR)/ Corrosion resistant cemented carbide (WCCR)	Silicon carbide (RSiC)/ Silicon carbide (RSiC)

## Surface treatment

Priming	Finish
Painted with a primer, see internal standard M0700.00.0002	Navy gray color NCS 5804-B07G. Two-component high-solid top coating, see internal standard M0700.00.0004 for standard painting and M0700.00.0008 for special painting.

## Options

- Sensors: Thermistor, FLS, Pt100, VIS 10
- Pump memory
- Surface treatment (Epoxy)
- Zinc anodes
- Other cables

## Accessories

Discharge connections, adapters, hose connections, and other mechanical accessories  
Electrical accessories such as pump controller, control panels, starters, monitoring relays, cables

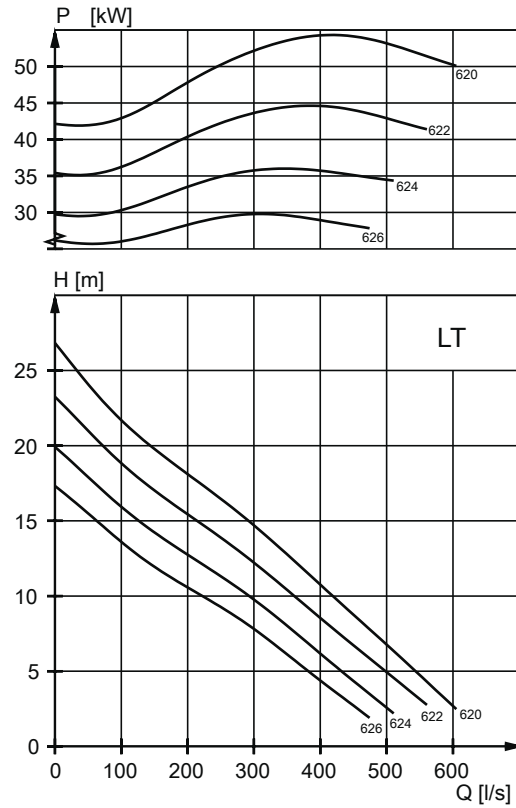


## 2.2 Motor rating and performance curves 3301.800/.810/.820/.830

These are examples of motor rating and curves. For more information, please contact your local sales and service representative.

Star-delta starting current is 1/3 of Direct on-line starting current.

LT



WS004063A

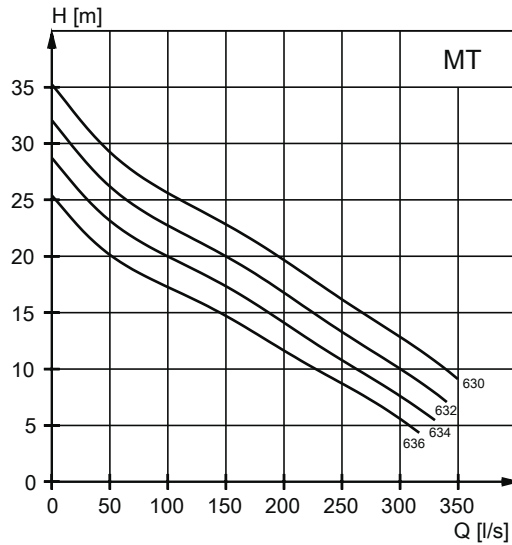
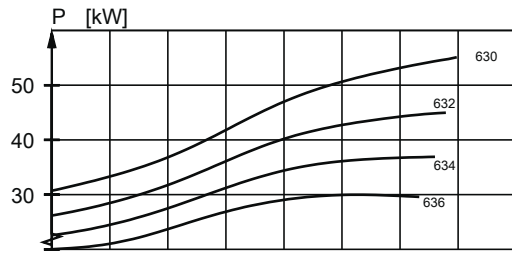


Table 11: 400 V, 50 Hz, 3-phase

Rated power, kW	Rated power, hp	Curve/ Impeller No	Revolutions per minute, rpm	Rated current, A	Starting current, A	Power factor, cos φ	Installation
45	60	622	985	83	600	0.84	P,S,T,Z
45	60	624	985	83	600	0.84	P,S,T,Z
45	60	626	985	83	600	0.84	P,S,T,Z
55	74	620	990	100	735	0.79	P,S,T,Z
55	74	622	990	100	735	0.79	P,S,T,Z
55	74	624	990	100	735	0.79	P,S,T,Z
55	74	626	990	100	735	0.79	P,S,T,Z



MT



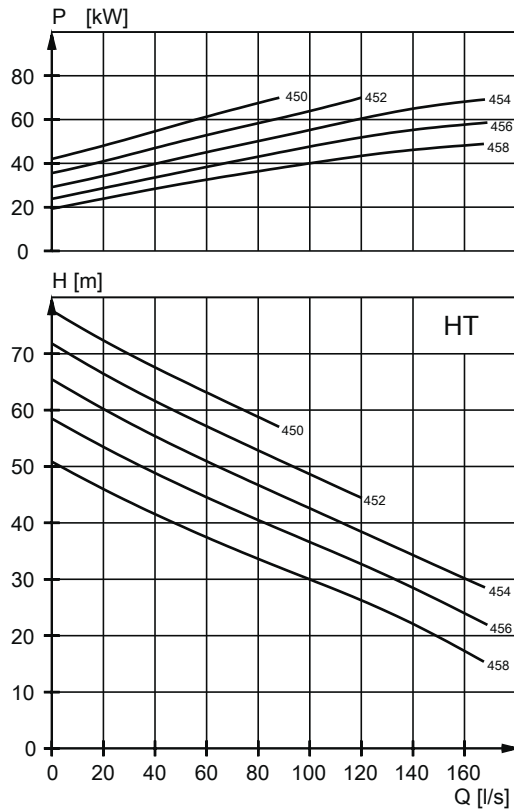
WS004064A



Table 12: 400 V, 50 Hz, 3-phase

Rated power, kW	Rated power, hp	Curve/ Impeller No	Revolutions per minute, rpm	Rated current, A	Starting current, A	Power factor, cos φ	Installation
45	60	632	985	83	600	0.84	P,S,T,Z
45	60	634	985	83	600	0.84	P,S,T,Z
45	60	636	985	83	600	0.84	P,S,T,Z
55	74	630	990	100	735	0.79	P,S,T,Z
55	74	632	990	100	735	0.79	P,S,T,Z
55	74	634	990	100	735	0.79	P,S,T,Z
55	74	636	990	100	735	0.79	P,S,T,Z

HT



WS004065A



Table 13: 400 V, 50 Hz, 3-phase

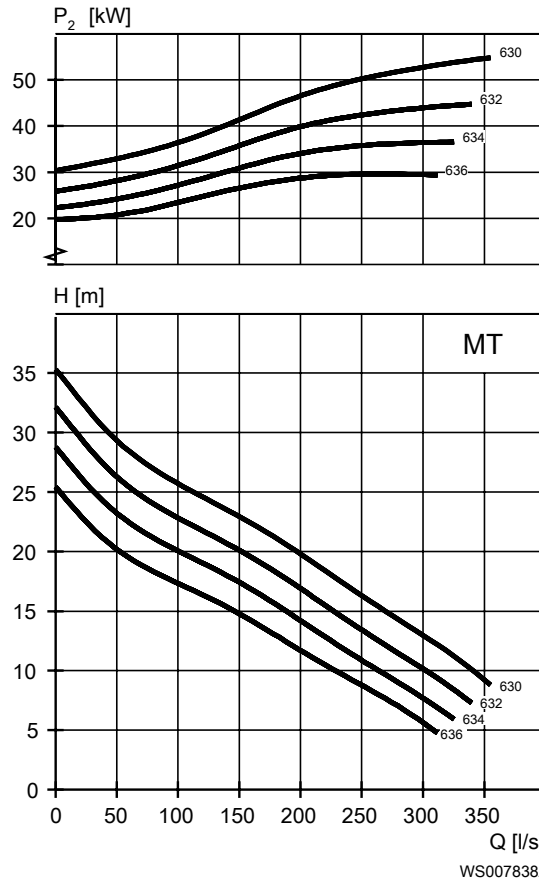
Rated power, kW	Rated power, hp	Curve/ Impeller No	Revolutions per minute, rpm	Rated current, A	Starting current, A	Power factor, cos φ	Installation
55	74	452	1485	97	640	0.86	P,S,T,Z
55	74	454	1485	97	640	0.86	P,S,T,Z
55	74	456	1485	97	640	0.86	P,S,T,Z
55	74	458	1485	97	640	0.86	P,S,T,Z
70	94	450	1485	123	900	0.86	P,S,T,Z
70	94	452	1485	123	900	0.86	P,S,T,Z
70	94	454	1485	123	900	0.86	P,S,T,Z
70	94	456	1485	123	900	0.86	P,S,T,Z
70	94	458	1485	123	900	0.86	P,S,T,Z

## 2.3 Motor rating and performance curves 3301.860/.870

These are examples of motor rating and curves. For more information, please contact your local sales and service representative.

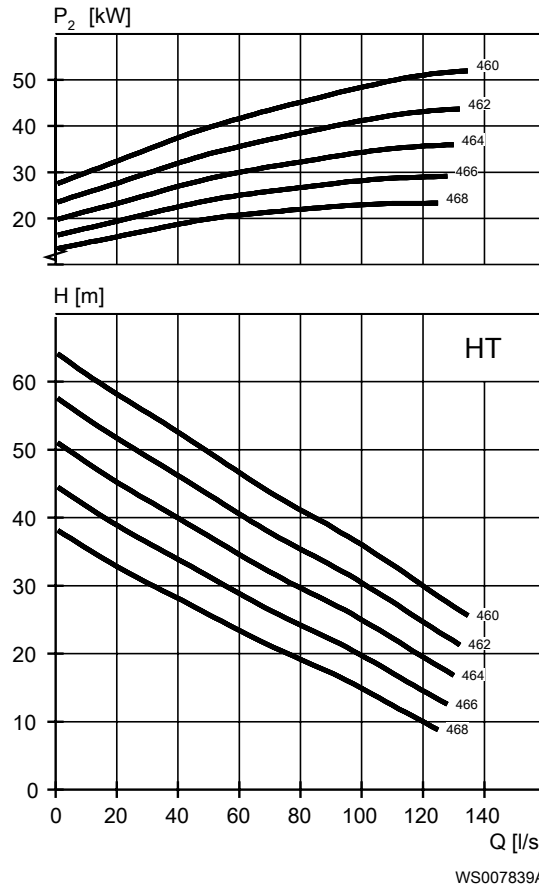
Star-delta starting current is 1/3 of Direct on-line starting current.

MT



Rated power, kW	Rated power, hp	Curve/ Impeller No	Revolutions per minute, rpm	Rated current, A	Start current, A	Power factor, cos φ	Installation
45	60	632	985	83	600	0.84	P,S
45	60	634	985	83	600	0.84	P,S
45	60	636	985	83	600	0.84	P,S
55	74	630	985	100	735	0.85	P,S
55	74	632	985	100	735	0.85	P,S
55	74	634	985	100	735	0.85	P,S
55	74	636	985	100	735	0.85	P,S

HT



Rated power, kW	Rated power, hp	Curve/ Impeller No	Revolutions per minute, rpm	Rated current, A	Start current, A	Power factor, cos φ	Installation
55	74	460	1485	97	675	0.87	P,S
55	74	462	1485	97	675	0.87	P,S
55	74	464	1485	97	675	0.87	P,S
55	74	466	1485	97	675	0.87	P,S
55	74	468	1485	97	675	0.87	P,S
70	94	460	1485	132	905	0.8	P,S
70	94	462	1485	132	905	0.8	P,S
70	94	464	1485	132	905	0.8	P,S
70	94	466	1485	132	905	0.8	P,S
70	94	468	1485	132	905	0.8	P,S

# 3 Dimensions and Weight, Standard Motor



## 3.1 Drawings

All drawings are available as Acrobat documents (.pdf) and AutoCad drawings (.dwg). Contact a local sales and service representative for more information.

All dimensions are in mm.

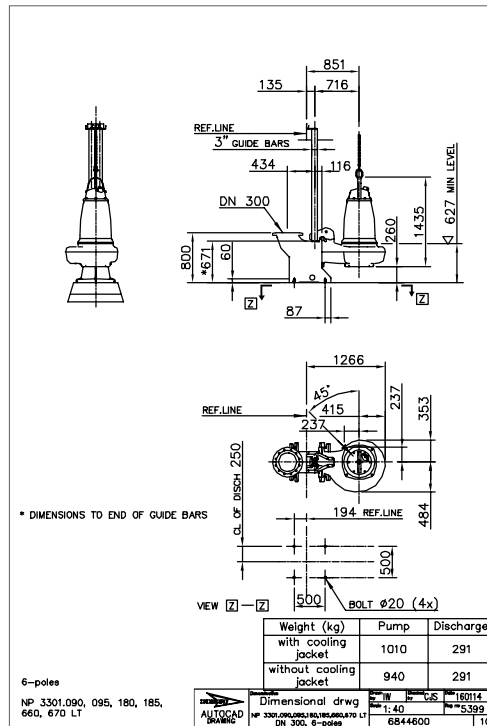


Figure 1: LT, P-installation

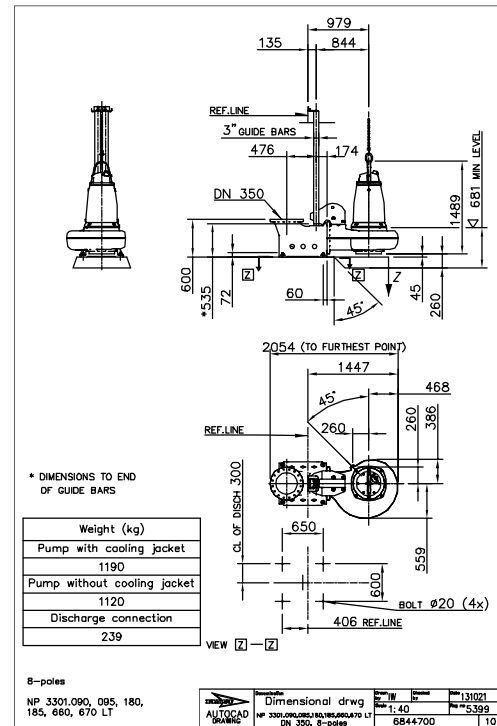


Figure 2: LT, P-installation

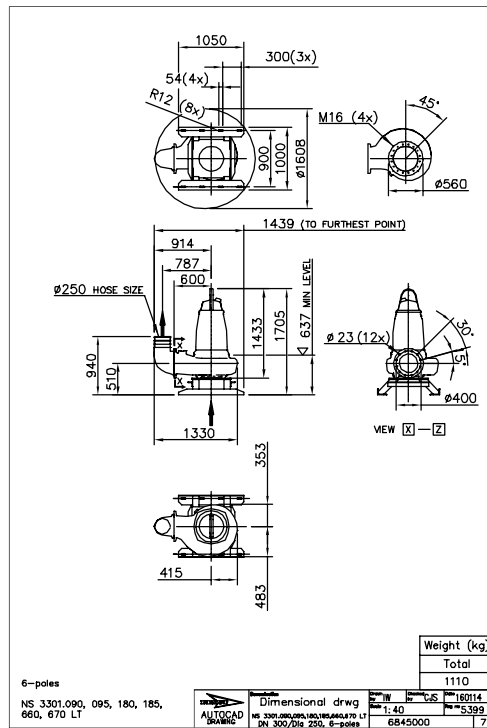


Figure 3: LT, S-installation

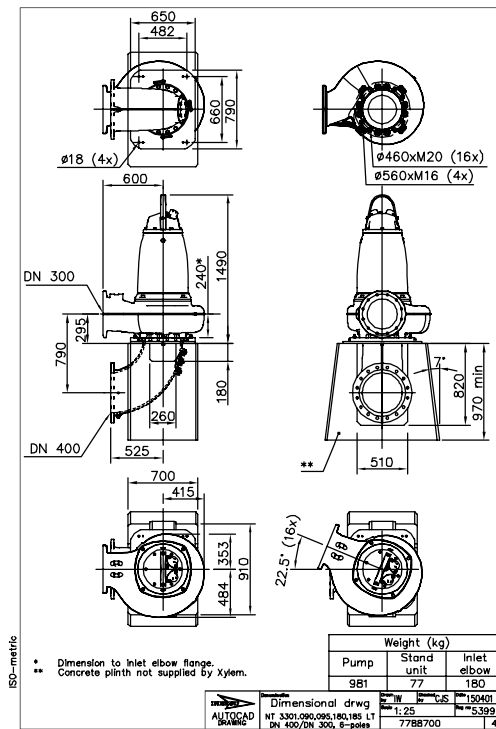


Figure 4: LT, T-installation

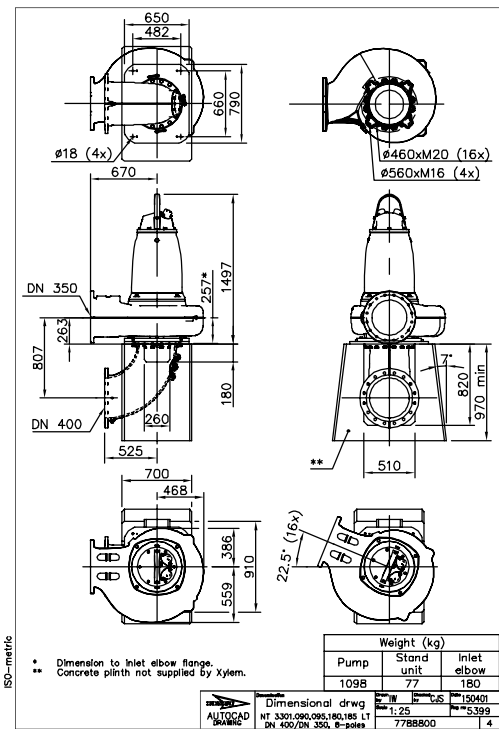


Figure 5: LT, T-installation

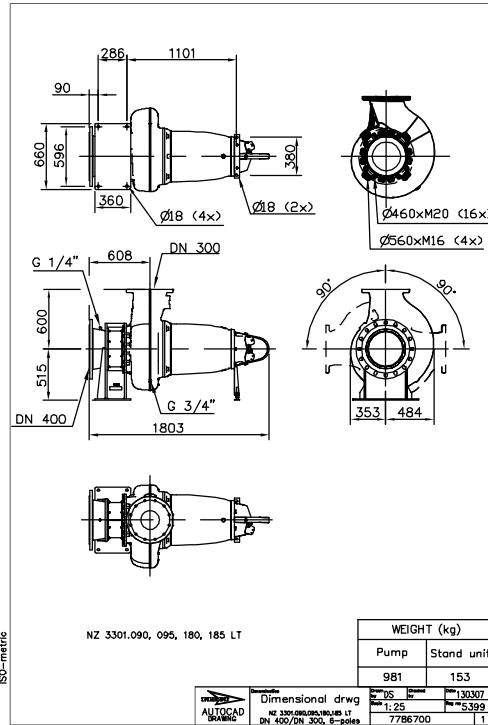


Figure 6: LT, Z-installation

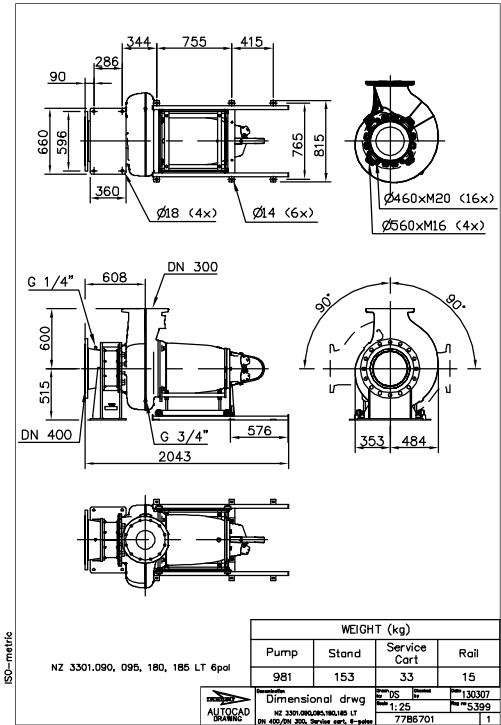


Figure 7: LT, Z-installation

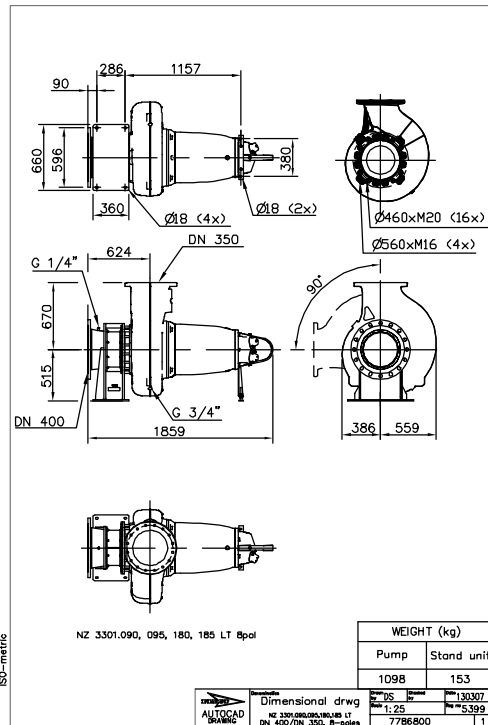


Figure 8: LT, Z-installation

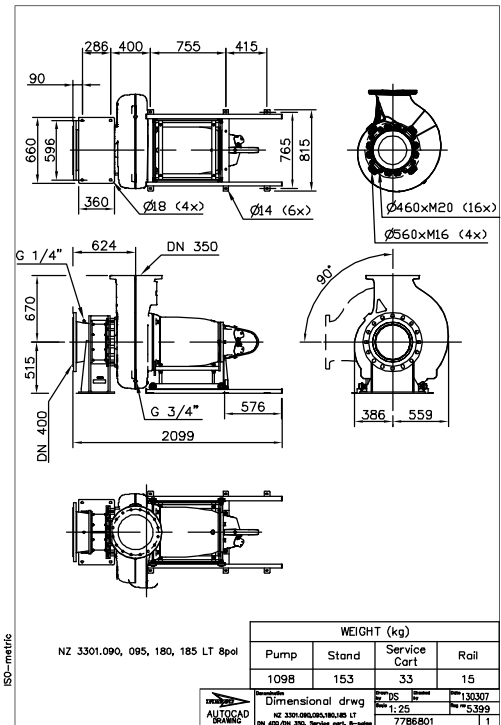


Figure 9: LT, Z-installation

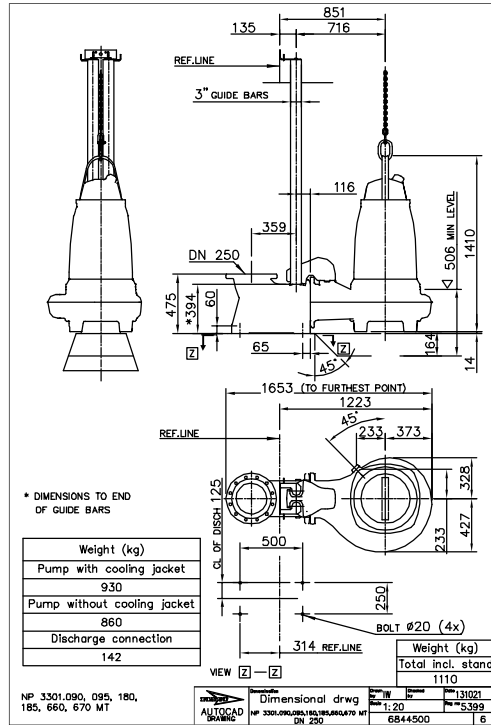


Figure 10: MT, P-installation

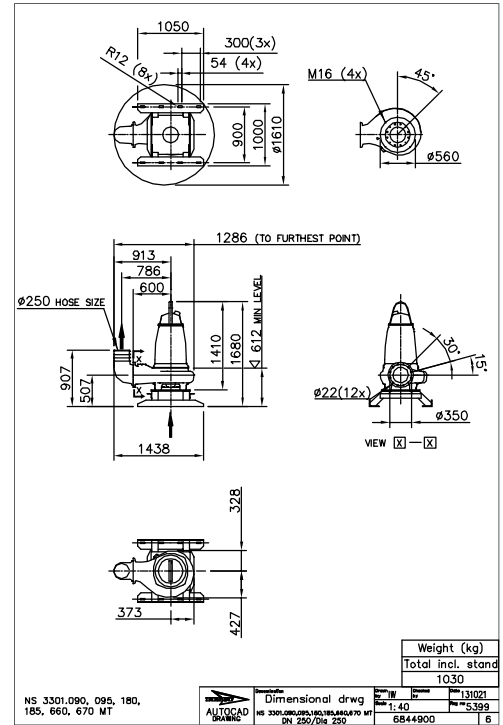


Figure 11: MT, S-installation

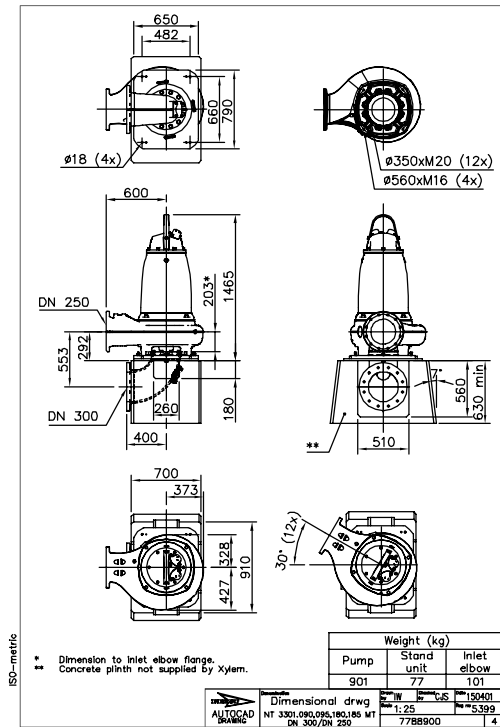


Figure 12: MT, T-installation

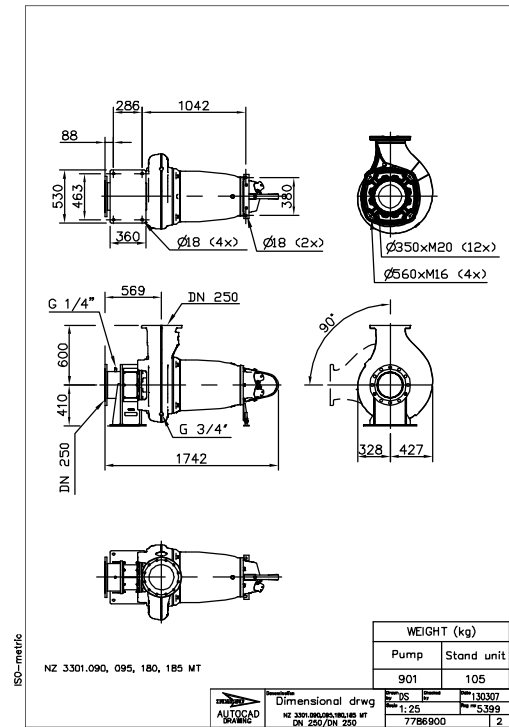


Figure 13: MT, Z-installation



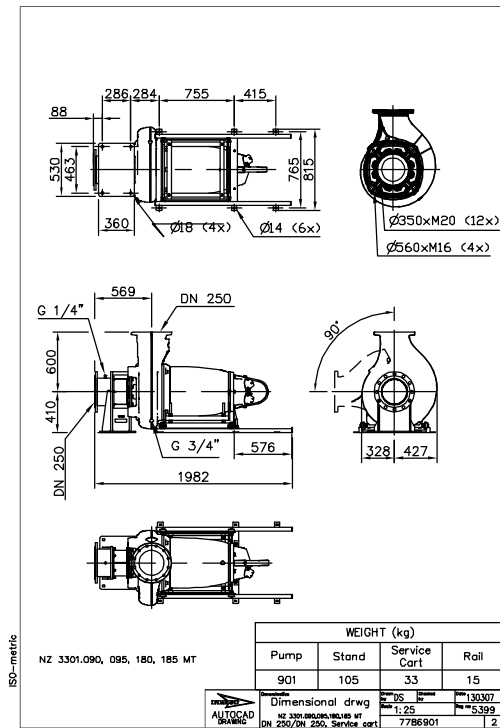


Figure 14: MT, Z-installation

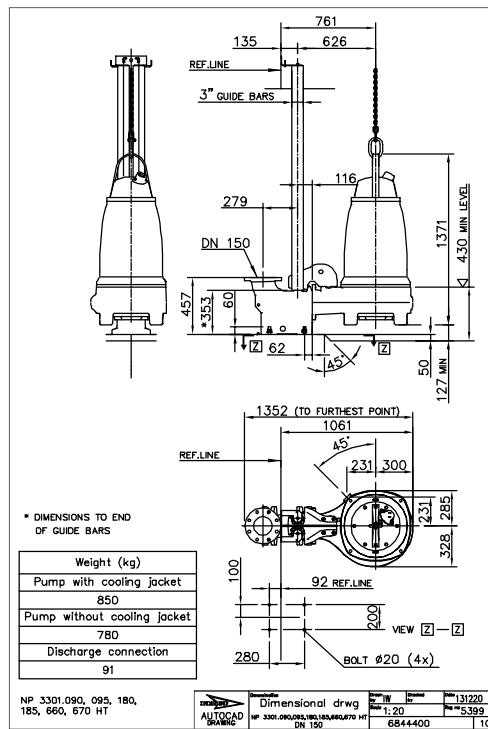


Figure 15: HT, P-installation

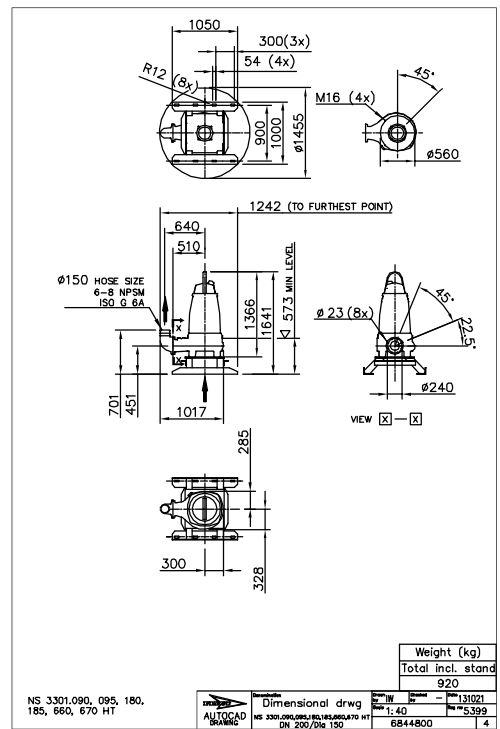


Figure 16: HT, S-installation



# 4 Dimensions and Weight, Premium Efficiency Motor (IE3)

## 4.1 Drawings

All drawings are available as Acrobat documents (.pdf) and AutoCad drawings (.dwg). Contact a local sales and service representative for more information.

All dimensions are in mm.

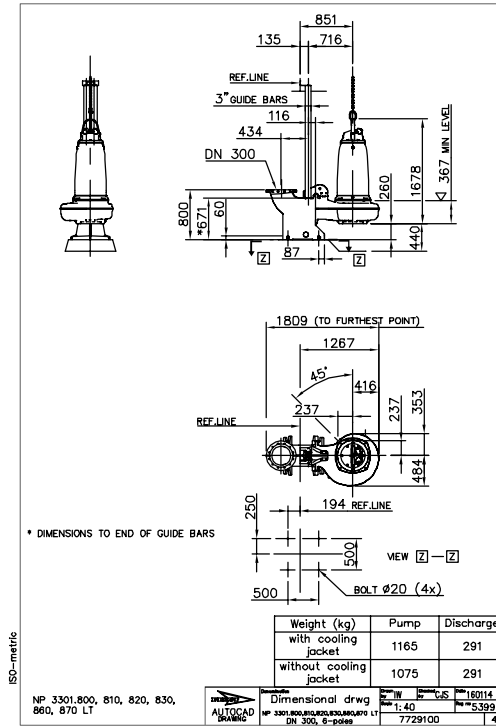


Figure 20: LT, P-installation

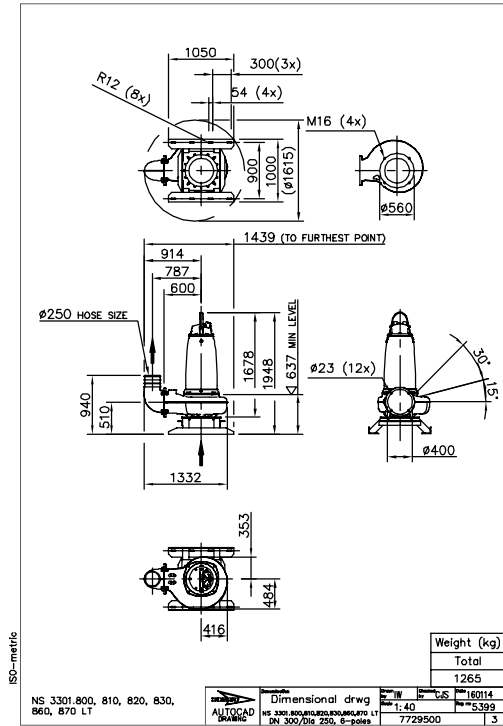


Figure 21: LT, S-installation

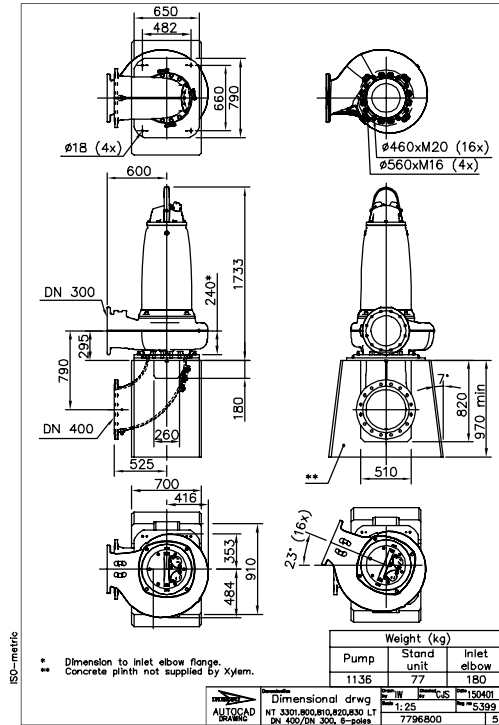


Figure 22: LT, T-installation

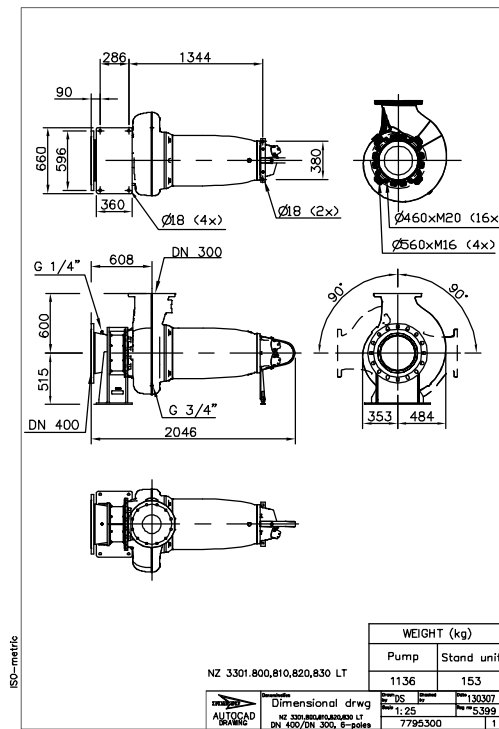


Figure 23: LT, Z-installation

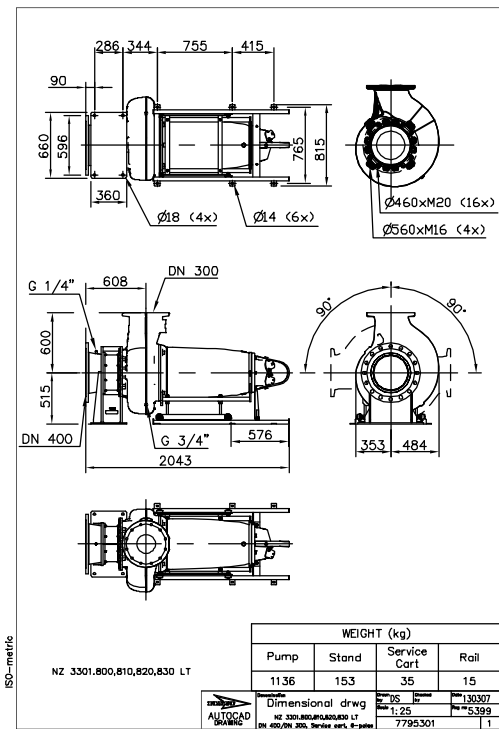


Figure 24: LT, Z-installation

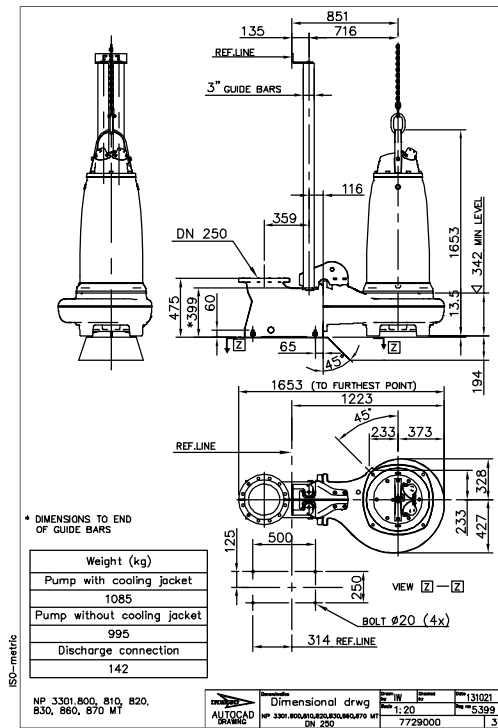


Figure 25: MT, P-installation

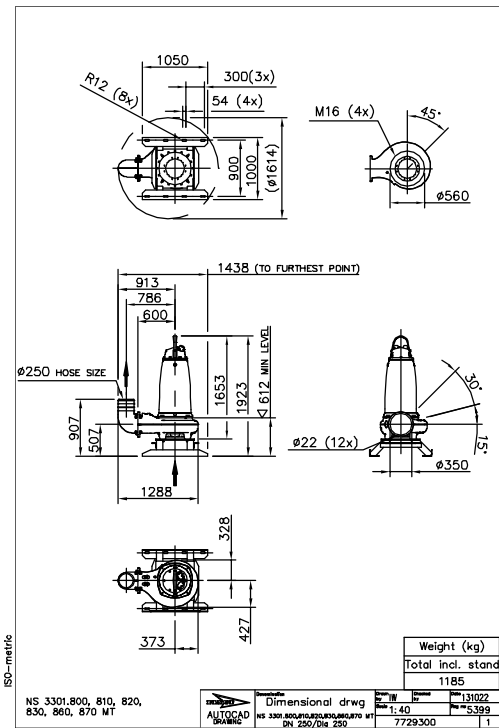


Figure 26: MT, S-installation

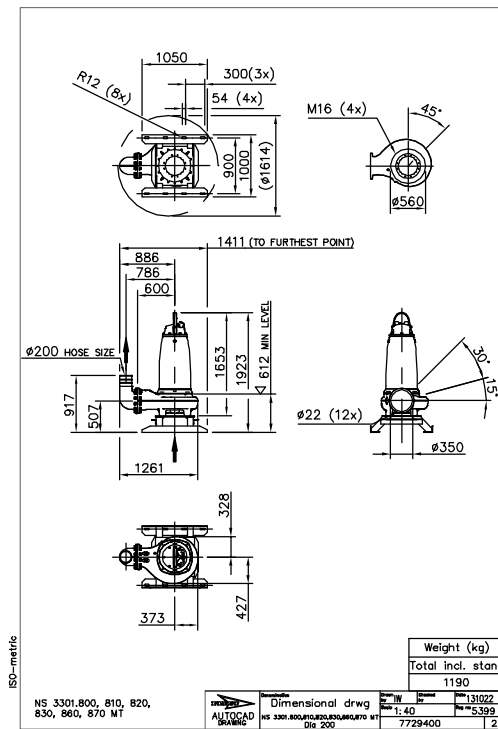


Figure 27: MT, S-installation

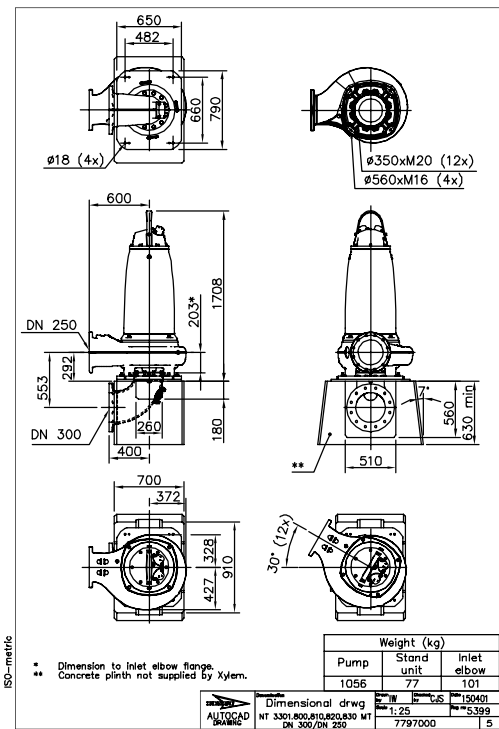


Figure 28: MT, T-installation



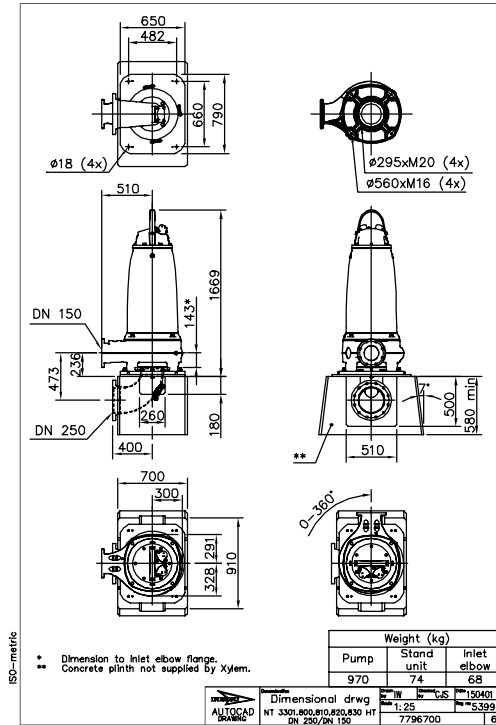


Figure 33: HT, T-installation

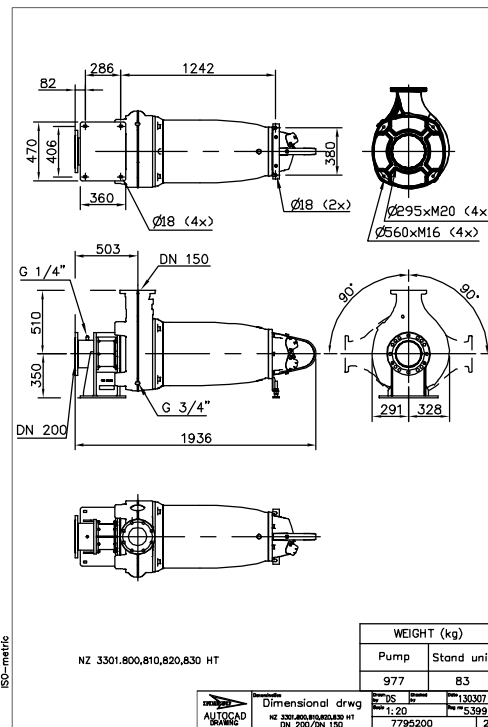


Figure 34: HT, Z-installation

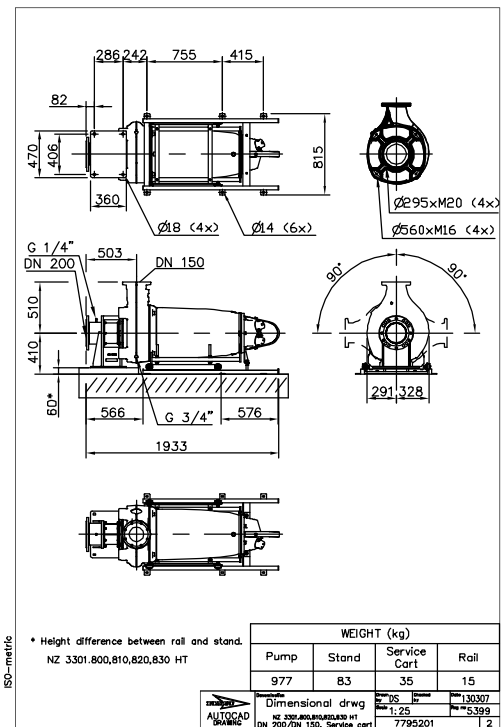


Figure 35: HT, Z-installation

# Xylem |'zīləm|



- 1) The tissue in plants that brings water upward from the roots;
- 2) a leading global water technology company.

We're a global team unified in a common purpose: creating advanced technology solutions to the world's water challenges. Developing new technologies that will improve the way water is used, conserved, and re-used in the future is central to our work. Our products and services move, treat, analyze, monitor and return water to the environment, in public utility, industrial, residential and commercial building services settings. Xylem also provides a leading portfolio of smart metering, network technologies and advanced analytics solutions for water, electric and gas utilities. In more than 150 countries, we have strong, long-standing relationships with customers who know us for our powerful combination of leading product brands and applications expertise with a strong focus on developing comprehensive, sustainable solutions.

For more information on how Xylem can help you, go to [www.xylem.com](http://www.xylem.com)



Xylem Water Solutions Global  
Services AB  
361 80 Emmaboda  
Sweden  
Tel: +46-471-24 70 00  
Fax: +46-471-24 74 01  
<http://tpi.xylem.com>  
[www.xylemwatersolutions.com/  
contacts/](http://www.xylemwatersolutions.com/contacts/)

Visit our Web site for the latest version of this document and more information

The original instruction is in English. All non-English instructions are translations of the original instruction.

© 2012 Xylem Inc