



HidroFlush Valve

The **HidroFlush Valve (HFV)** creates circulation in the well to maintain solids in suspension, preventing sedimentation and reducing pump blockage.

The operation is automatic and induced by the pump flow and pressure, thus eliminating the need for electric components and cabling

Key Benefits

- Keeps the wet well clean-reducing maintenance costs.
- By creating circulation, solids are carried more readily into the pump suction at every pump cycle.
- By using available hydraulic pump energy both new & retrofit installations are straightforward. No need for additional motors or power supplies. Suitable for designated hazardous installations.
- The simple but highly effective, hydraulic operation together with a robust construction, mean an overall reduction in pumping station maintenance.





SET UP

Due to the many variables in each application it is recommended to initially set the HidroFlush Regulating Valve to position 3.

1. Slacken the two locking plate screws then rotate the adjuster so that the required setting is at 12-o-clock then retighten the locking plate screws.
2. Operate the pump normally and measure the HidroFlush operating time. The recommended operating time is 20 seconds with a maximum of 50 seconds.
3. To increase the flushing time, adjust the Regulating Valve to a higher number, following the procedure in (1) above. To decrease the flushing time set the Regulating Valve to a lower number. Remember to retighten the locking plate screws after making adjustments.



Models	Product model number	HFV 40A
	Discharge Diameter	40mm
	Weight	9.5kg
	Applicable Installation	Submersible Waste Water
	Applicable pump	DN80-300mm
Process Data	Liquid temperature	0-40°C
	The pH of the pumped liquid	5.5 - 14
	Length of flushing time	Recommended: 20 sec (Max. 50 sec)
Materials	Outer & Inner membrane, gaskets, O-ring	NBR
	Outlet bend, HFV body, bracket	Grey Cast Iron
	Control fluid	Vegetable Oil
	Ball Valve	Stainless Steel
	Regulating valve	Brass
Surface Finishing	All cast parts are primed with a water based primer. The finishing coat is high-solid, two part epoxy paint.	

Allowable Pump Head

Limitation

As the operation of the **HidroFlush** relies on the pump pressure and flow, flushing performance will vary according to the hydraulic conditions of the system. If the conditions fall outside of the parameters shown below please contact Hidrostal for technical advice.

Max Allowable Pump Head

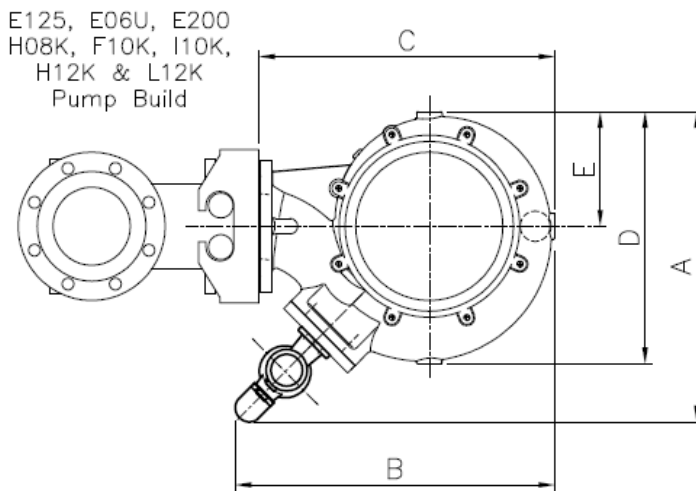
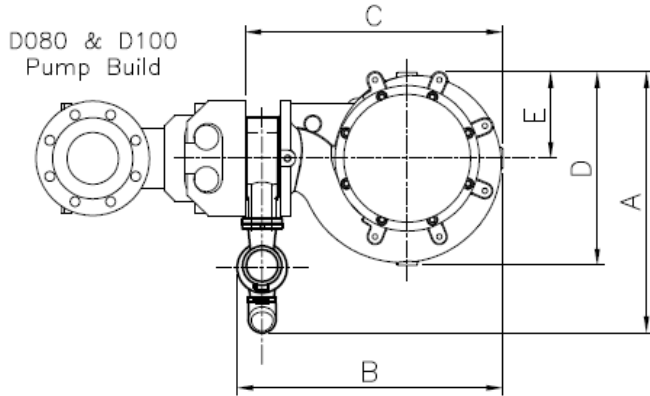
The maximum allowable pump head is 65 metres

Min Permitted Pump Discharge Head

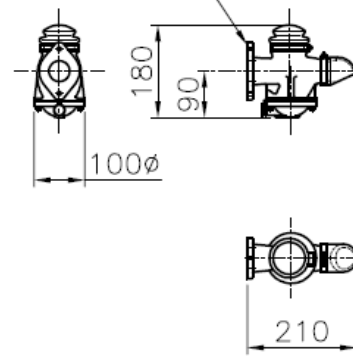
DN 50-80mm	DN 100-150mm	DN200-DN300mm
6.0m	5.5m	5.0m



Dimensional Drawing



10 thk. mounting flange
suitable for 2 no. M8
stud fixings.
10mm ϕ mounting holes at
85mm centres

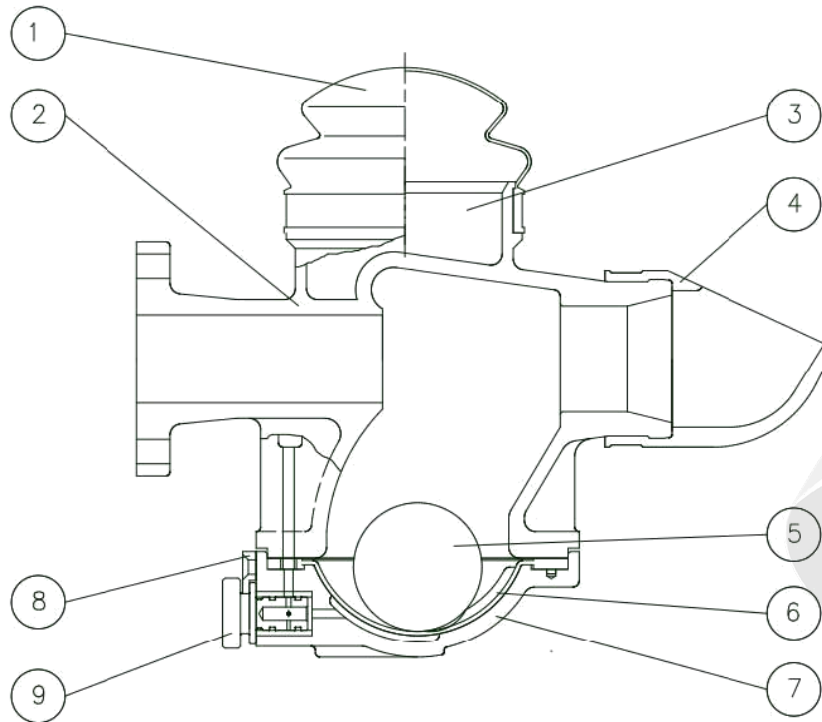


HydroFlush Valve 40A

Pump Type	Pump Discharge Nominal	A	B	C	D	E
D080	80mm	495mm	465mm	450mm	335mm	165mm
D100	100mm	505mm	515mm	500mm	375mm	170mm
E125	125mm	600mm	620mm	575mm	485mm	220mm
E06U	150mm	650mm	685mm	630mm	550mm	245mm
E200	200mm	685mm	745mm	715mm	610mm	255mm
H08K	200mm	820mm	860mm	915mm	760mm	340mm
F10K	250mm	785mm	825mm	830mm	710mm	315mm
I10K	250mm	995mm	1000mm	1155mm	970mm	425mm
H12K	300mm	1040mm	1120mm	1180mm	1000mm	450mm
L12K	300mm	1220mm	1295mm	1445mm	1245mm	560mm



Sectional Drawing



No.	Part Name	Qty	Material
1	Outer membrane	1	NBR
2	HFV body	1	GC200
3	Control fluid	1	ISO VG 32
4	Outlet bend	1	NBR
5	Ball	1	SS 304
6	Inner membrane	1	NBR
7	Valve Cover	1	Cast Iron
8	Positioning pin	1	Brass
9	Regulating valve	1	Brass

