

**Submersible pumps  
 for clear and drainage water.**

## H106, H117

### Application

Pump for conveying clean or soiled water. Cellar draining, keeping trenches, shafts and rooms dry. Domestic waste water disposal in cellar rooms (e.g. washbasins, showers, washing machines). Reduction of surface water. Emergency deployment for flooding. Water extraction from watercourses.  
**DIN EN 12050-2:** Design tested and monitored.

**Installation:** Stationary or mobile. Version with float switch for use as automatic water level controlled drainage pump.

**Pumped medium:** Clear- or drainage water containing solids up to 10 mm particle size. Max. temperature of pumped medium: 40° C, for brief periods up to 60° C.

**Operating mode:** Continuous operation (S1).

At medium temperature 41-60° C:  
 Intermittent operation (S3 30%).

### Design

Fully submersible pump, consisting of:

**Pump:** Single-stage centrifugal pump with horizontal discharge.

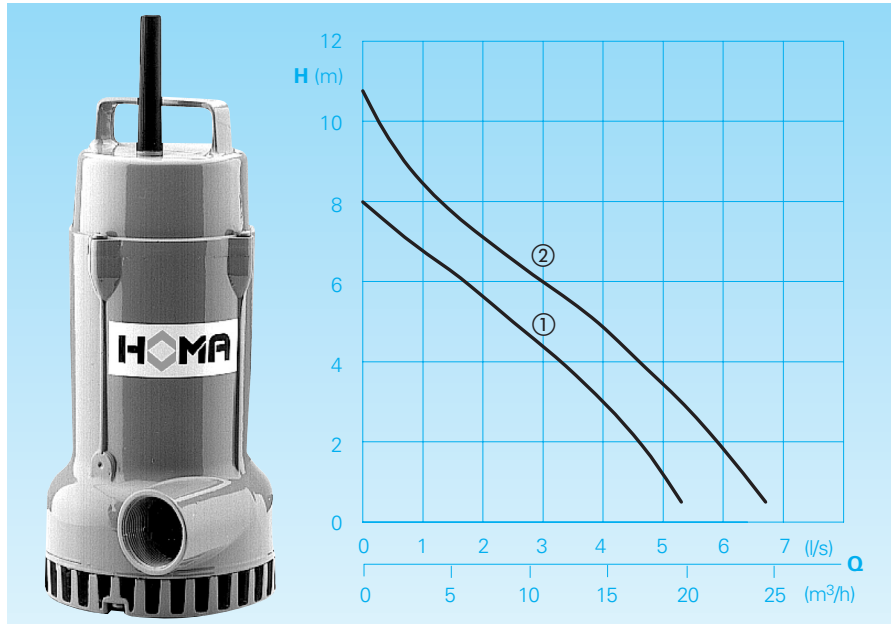
**Impeller:** Open multi-blade impeller, free passage 10 mm.

**Motor:** Fully submersible motor, sealed against pressurized water, oil-filled. Insulation class H, Protection rating IP 68. Thermal sensor for temperature monitoring in the winding. Electrical compartment is separate from motor. Connecting cable: H07RN-F3G1

**Shaft/bearing:** strongly dimensioned chrome steel motor shaft, lifetime-lubricated roller bearings.

**Seal:** Triple radial seal.

### Conveying capacities



### Technical data

Curve No.	Pump type	Motor input		Voltage 50 Hz (V)	Nominal current (A)	Weight (kg)
		P <sub>1</sub> (kW)	P <sub>2</sub> (kW)			
①	H106 W(A)	0,8	0,5	230/1Ph	4,5	11,0
②	H117 W(A)	1,1	0,6	230/1Ph	5,1	11,0

**Rotational speed:** 2900 rpm  
**Discharge:** G1 1/2

**Model A:** with automatic float switch  
 HOMA-Nivomatik

### Materials

Motor housing, motor housing cover, suction sieve, suction cover	Aluminium
Impeller	Cast iron EN-GJL-250
Motor shaft, screws	Stainless steel
Elastomers	NBR

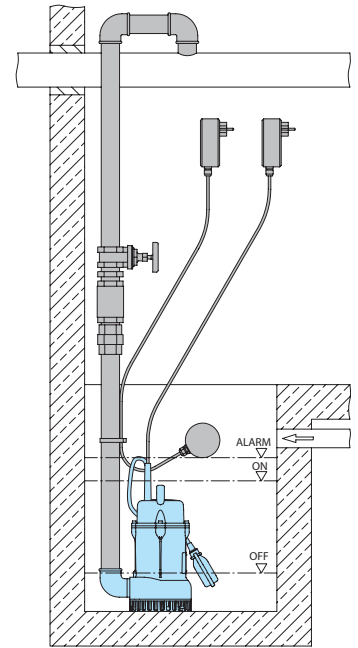
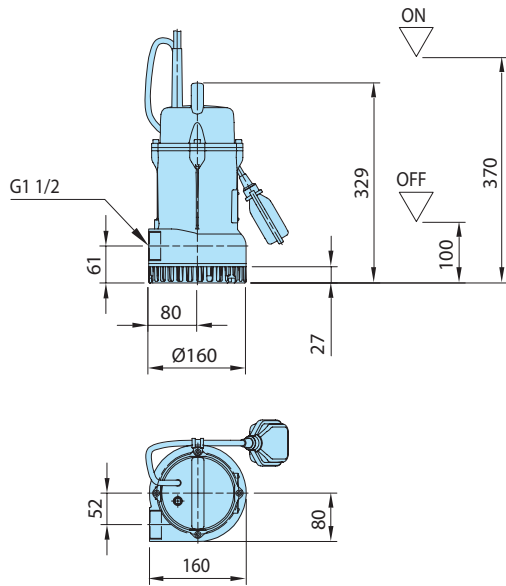
### Scope of supply

Pump with 10 connecting cable.

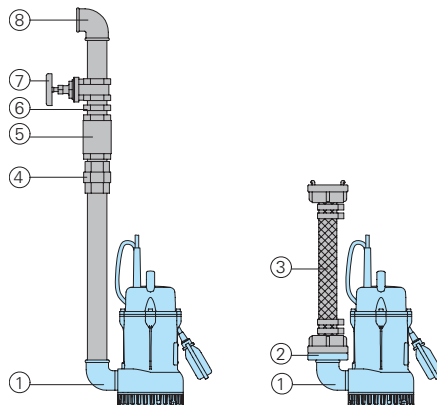
**Model W (230 V/1 Ph):** With switchgear W1, motor protection, ON-OFF switch and mains plug.

**Model A:** Additionally with automatic float switch on pump lid, switchgear WA1 with Manual/Auto switch.

Shaft installation with pressure pipe, level control and switchgear



Accessories



Description	Size	Part no.	Description	Size	Part no.
① Connection bend 90°, galvanized	BSP 1 1/2" F/M	2111505	○ Fault-current circuit breaker 2-pin, Fi 16/0.03 A		1561160
② Fixed coupling, Brass	BSP 1 1/2" M	2005513	○ Mains-dependent alarm control unit AL3 with connector for 9 V rechargeable battery (see below) for operation independent of mains power supply, with built-in signal transmitter, float switch and 10 m of cable. Main phase connection 230V/1Ph		1586141
STA-threaded hose-fitting, brass	BSP 1 1/2" M	2001513	9 V rechargeable battery for mains-independent alarm		1952215
STORZ-fixed coupling	C-G 1 1/2" M	2010003	○ For pump controllers and switchgears for mobile and stationary applications, measuring systems and monitoring devices, see HOMA accessories		
③ PVC-hose, per m	1 1/2" Ø 38 mm	2621500			
Plastic spiral hose, per m	1 1/2" Ø 38 mm	2632042			
Hose coupling, brass	1 1/2"	2003513			
STORZ-hose-coupling	C-38 Ø	2013002			
Hose clamp	1 1/2"	2304854			
④ Transition screw connection, galvanized	BSP 1 1/2" M/F	2114305			
⑤ Non-return valve, Messing	BSP 1 1/2" F	2211313			
⑥ Double nipple, galvanized	BSP 1 1/2" M	2009020			
⑦ Shut-off gate valve, brass	BSP 1 1/2" F	2216015			
⑧ Connection bend 90°, galvanized	BSP 1 1/2" F	2113605			
T-piece for merging the pressure pipe in double pump stations, galvanized	BSP 1 1/2" F	2114302			



We reserve the right to alter our specifications without notice!