



SCUBA

RELIABLE, POWERFUL WATER SUPPLY.

SCUBA Above and beyond.

The new SCUBA compact close-coupled submersible pump from Xylem brings a new level of reliability and flexibility to primary water supply options for wells, tanks or reservoirs, sprinkler irrigation systems, and pressure boosting. SCUBA quiet, compact multistage pumps are high performance and corrosion resistant, and designed to help people solve mainly domestic, light commercial and agricultural water challenges. They are certified to the Water Regulations Advisory Service (WRAS) drinking water

standard. This makes them perfectly suited to applications like private wells or tanks for residential use, alongside the SCUBA DRY version for working outside of the well as a noiseless surface booster pump.

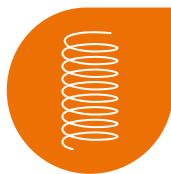
They are also the ideal choice for irrigation, sourcing water from ponds, lakes, ditches or cisterns, as well as watering of domestic gardens or rainwater harvesting. Scuba also has light industrial use such as in car washing systems for water reuse, filtering machines or hoppers.



Range Overview

Power: 0.55kW up to 2.2kW
Head up to: 100 m
Flows up to: 11.5 m³/h

Maximum immersion depth: 20m
Temperature of pumped liquid: 0 °C to 40 °C
Maximum permissible quantity of sand: 25 g/m³
Variable speed option available



Flexibility.

Float switch can be installed when required at workshop or on the field

Customizable power supply cable length

Reduction of inventory costs



Fresh drinking water.

Drinking water WRAS certified product



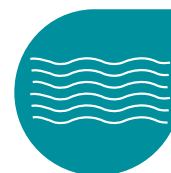
Easy installation.

Plug-in power supply cable and float switch

Robust delivery manifold for a safe installation

Balanced lifting eye for a simplified handling

Plug and pump solution thanks to built in capacitor and motor protection for single phase



Comfort.

Noiseless operation for maximum comfort

Constant pressure application in combination with a variable speed drive



Reliability.

Corrosion resistant delivery head

Sacrificial anode kit to extend pump's life in harsh environments

Sand abrasion resistant impellers

Laser engraved nameplate to ensure data availability over the time



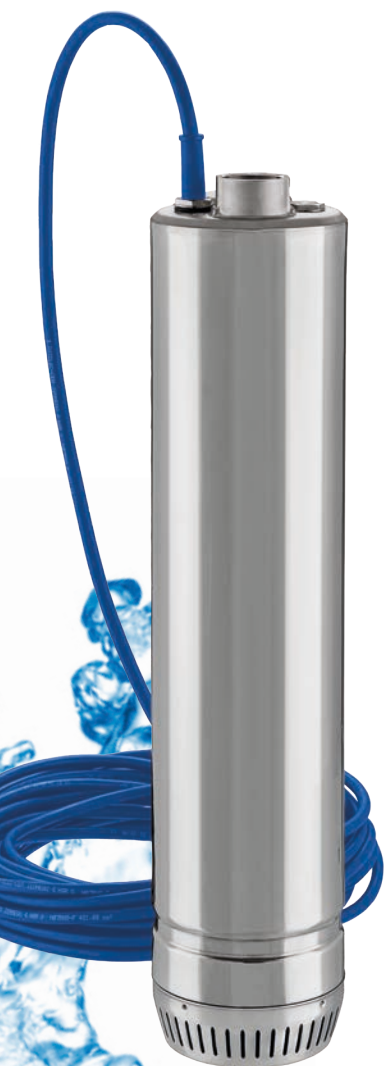
Sustainability.

High efficiency hydraulics

100% recyclable cardboard packaging

Quick start guide provided with the product

Online installation and operation manual



Dive into SCUBA endless solutions.



• Rainwater
harvesting.

Water supply and pressure boosting solutions for multiple applications: domestic, irrigation and industry.

SCUBA is perfect for private open wells, tanks and cisterns for drinking water supply - as well as rain water harvesting or silent pressure boosting with the new SCUBA DRY version.



• Silent pressure boosting.

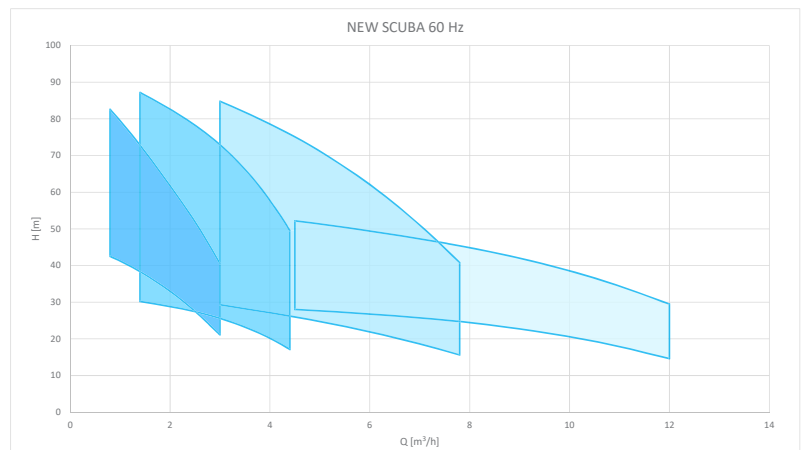
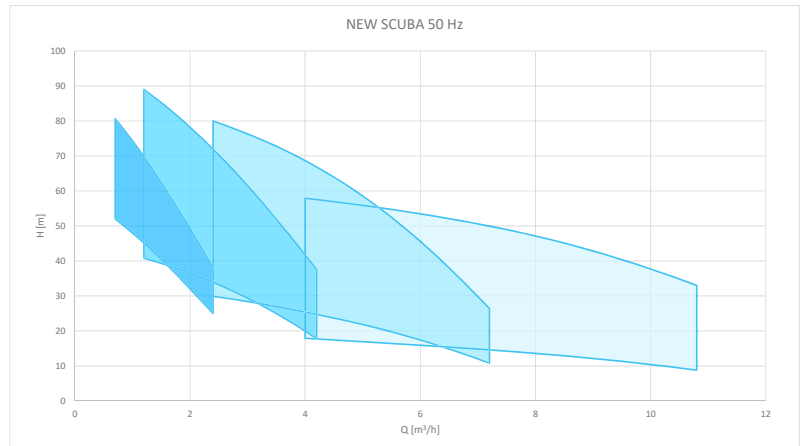
• Groundwater supply from open wells.



Performance range.

The high-performance SCUBA range of 5" stainless steel submersible pumps delivers up to 12m³/h and 100m max head with motor power up to 2,2 KW. The electric motor is cooled by pumped liquid, and an internal capacitor and built-in thermal protection means the pump does not require connection to a control panel for starting.

The new delivery head is a unique component made of precision casting stainless steel to provide extreme resistance to corrosion and ensuring a robust pipe connection. Each pump is equipped with high-efficiency hydraulics and abrasion resistant impellers that will ensure stable performance over many years. When used in coastal areas, the sacrificial anode kit accessory also lengthens life by protecting from corrosion.



Main features.

- Delivery head in cast stainless steel
- Plug in cables for easy replacement and installation
- WRAS certified product
- High efficiency hydraulics - sand abrasion resistant impellers
- Laser engraved nameplate

DRY Version.

The SCUBA DRY version is the right choice for installation in tanks for rainwater harvesting, or outside of a well or reservoir for boosting pressure, thanks to an engine cooled by the pumped liquid.

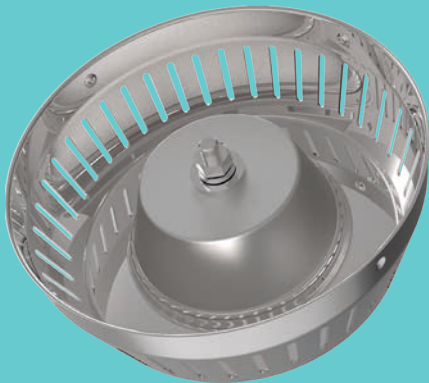


Accessories.

Practical thinking ensures long term service from SCUBA. Xylem has carefully developed options and components enabling you to tailor and maximize the performance of the product.

Sacrificial anode accessory kit

- Increase pump lifetime in harsh environments
- Easy to be installed



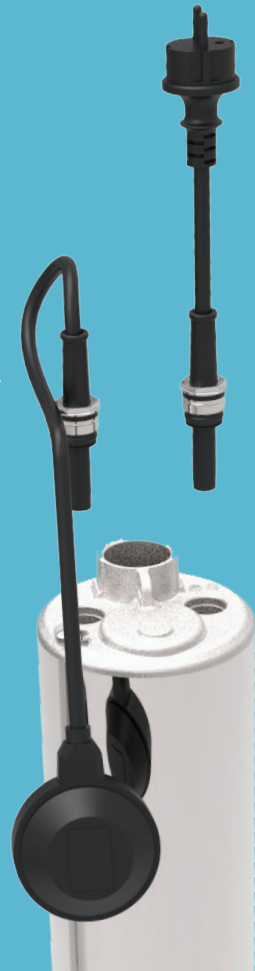
External capacitor version

- Customizable cord length
- Customizable plug type



Floater accessory kit

- Float switch can be installed when required at workshop or on the field
- Easy installation



Floating suction device for SCUBA DRY

- The floating suction device reduces the potential intake of sediment that may settle at the bottom of water harvesting tanks.



Xylem |'zīləm|

- 1) The tissue in plants that brings water upward from the roots;
- 2) a leading global water technology company.

We're a global team unified in a common purpose: creating advanced technology solutions to the world's water challenges. Developing new technologies that will improve the way water is used, conserved, and re-used in the future is central to our work. Our products and services move, treat, analyze, monitor and return water to the environment, in public utility, industrial, residential and commercial building services, and agricultural settings. With its October 2016 acquisition of Sensus, Xylem added smart metering, network technologies and advanced data analytics for water, gas and electric utilities to its portfolio of solutions. In more than 150 countries, we have strong, long-standing relationships with customers who know us for our powerful combination of leading product brands and applications expertise with a strong focus on developing comprehensive, sustainable solutions.

For more information on how Xylem can help you, go to www.xylem.com/uk



Xylem Water Solutions UK Ltd.

Main Office

Private Road No.1
Colwick, Nottingham NG4 2AN
Tel 0115 940 0111
Fax 0115 940 0444
Email fgbsales@xylem.com
www.xylem.com/uk

Axminster Office

Millwey Rise Industrial Estate
Axminster, Devon EX13 5HU
Tel 01297 630 230
Fax 01297 630 270
Email lowaraukenquiries@xylem.com
www.xylem.com/uk

Farnborough Office

106 Hawley Lane
Farnborough, Hampshire GU14 8JE
Tel 0800 009 3611
Fax 0800 009 3613
Email ukservicesales@xylem.com
www.xylem.com/uk

Xylem Service & Rental UK

24/7 Rental & Service Call Centre
Tel 0845 707 8012

Xylem Water Solutions Ireland Ltd.

50 Broomhill Close
Airton Road, Tallaght, Dublin 24
Tel (+353) 01 4524 444
Fax (+353) 01 4524 795
Email flygtIURL@xylem.com
www.xylem.com/ie

